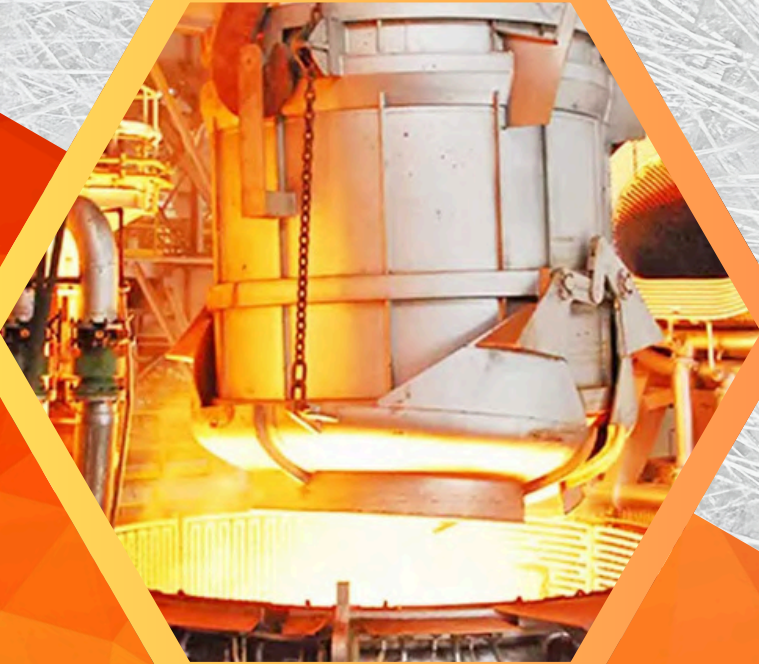




**INSULAC**  
CORP

HIGH PERFORMANCE  
**INSULATION**



[www.insulac.com](http://www.insulac.com)



**INSULAC**  
CORP

INSULAC CORP specializes in thermoplastic and thermosetting polymers, Mica Composites, Furnace Insulating Materials. Insulac Corp offering a comprehensive range of Thermal & Electrical Insulating Solutions and custom fabrication products to a global clientele. With a dedication to customer satisfaction, our enterprise is devoted to providing outstanding support and premium-grade materials that align with the specific requirements of our clients.

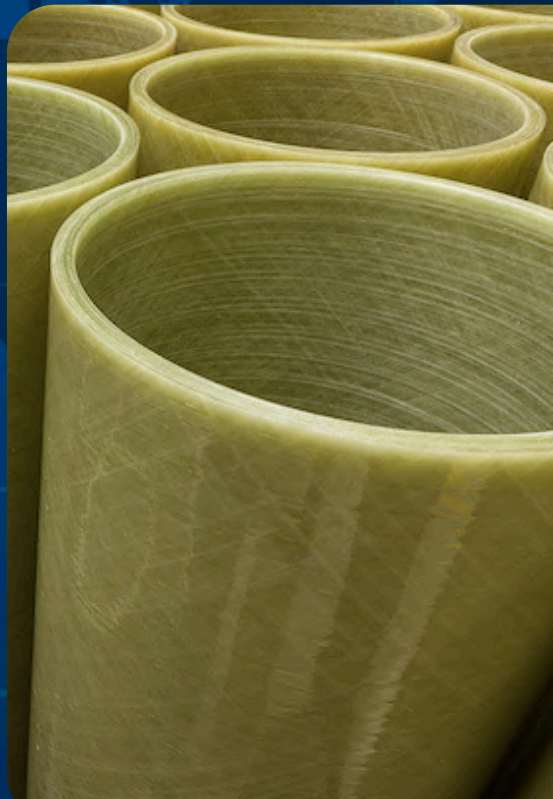




BEST IN

# INSULATION

- FRP COMPOSITES 04
  - MICA COMPOSITES 10
  - PTFE 15
  - SYNDANIO 16
  - CERAMICS INSULATION 17
  - INSULATION ROPES 18
  - OTHER INSULATION 19
  - MINERAL WOOL INSULATION 20
  - LIQUID LEVEL GAUGE SPARES 22
- 





# FRP Composite

FRP composites (Fiber Reinforced Polymer) are materials made from a polymer matrix reinforced with fibers, typically glass fiber, and combined with epoxy resin/ Polyester Resin or Silicone Resin to enhance strength and durability. These composites are widely used in various industries for their lightweight and high-performance properties.



## EPOXY LAMINATES - G-10/FR-4

Brand : SMITHLAMINA

Grade :

Products: Sheets, Tubes, Moulded Parts, Machined Parts

Size:

Temp: < 180°C

Available Colors



---

## EPOXY LAMINATES - G11

Brand : SMITHLAMINA

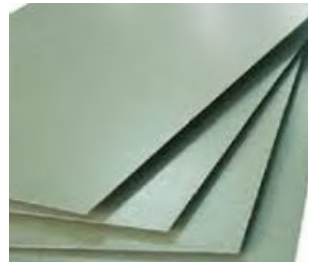
Grade :

Products: Sheets, Tubes, Moulded Parts, Machined Parts

Size:

Temp: < 180°C

Available Colors



## GLASS SILICONE LAMINATES - G7



Brand : SMITHLAMINA

Grade : NEMA G-7

Products: Sheets, Tubes, Fabricated Parts,  
Machined Parts

Temp: < 350°C

Available Colors

---

## GPO-3 Laminates

Brand : SMITHLAMINA

Grade : Nema GPO-3

Products: Sheets, Tubes, Moulded Parts,  
Machined Parts

Sheet Size: 1000 x 1200 - 1000x2400

Temp: < 150°C

Available Colors



---

## HIGH TEMP LAMINATES - HT270

Brand : SMITHTHERM

Grade : SMITHLAMINA -HT270

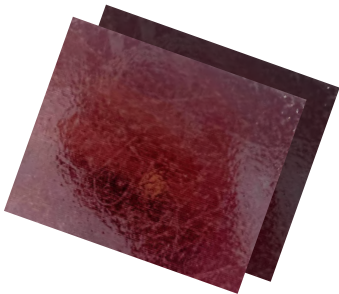
Availability : Sheet, Machined Parts

Size Availability: 1000 x 1200

Thickness : 3 to 50 mm

Temperature: 270°C

Color



---

## HIGH TEMP LAMINATES - HT1220

Brand : SMITHTHERM

Grade : SMITHLAMINA -HT1220

Availability : Sheet, Machined Parts

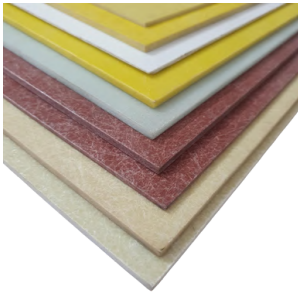
Size Availability: 1000 x 1200

Thickness : 3 to 50 mm

Temperature: 220°C

Color





## Fiber Glass Polyester (FRP) Sheet

Brand : SMITHLAMINA

Grade : FRP

Products: Sheets, Tubes, Moulded Parts,  
Machined Parts

Sheet Size: 1000 x 1200 - 1200x2400

Temp: < 150°C

Available Colors



---

## FRP TUBE - POLYESTER

Brand : SMITHLAMINA

Grade: Polyester Tube

Fabric: Glass Fabric

Size Availability: Upto 1000mm

Dia Upto : 6 - 200 mm

Temperature Withstand : < 150°C

Available Colors



---

## FIBERGLASS EPOXY TUBES

Brand : SMITHLAMINA

Grade: Epoxy Tube

Fabric: Glass Fabric

Size Availability: Upto 1500mm

Dia Upto : 6 - 1000 mm

Temperature Withstand : < 200°C

Available Colors



---

## Glass Fiber Silicone Tube - G-7

Brand : SMITHLAMINA

Grade: Nema Grade - G-7

Fabric: Glass Fabric

Length : Upto 1000mm

Dia Upto : 10 - 200 mm

Temperature Withstand : 350°C

Available Colors



## GPO -3 Tube

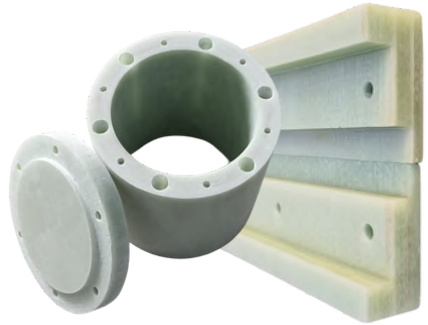


Brand : SMITHLAMINA  
Grade: Polyester Tube  
Grade : GPO-3  
Fabric: Glass Mat  
Length: Upto 1000mm, Dia : 10 -100 mm  
Temperature: 150°C

Available Colors 

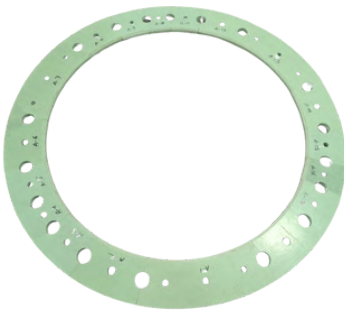
## Glass Fiber Fabricated Parts

Brand : SMITHLAMINA  
Grade :  
Products: Machined Parts






Available Colors    

## Glass Fiber Ring / Flange



Brand : SMITHLAMINA  
Products: FRP Flange  
Grade: Polyester, Epoxy, Silicone  
Fabric: Glass Mat, Glass Fabric  
Size Availability: As Per Drawing

Available Colors    

## FRP COLLAR BUSH

Brand : SMITHLAMINA  
Grade : Epoxy, Polyester  
Size Availability: As Per Drawing



Available Colors    



## FRP WASHER

Brand : SMITHLAMINA

Resin Grade: Polyester, Epoxy, Silicone

Fabric: Glass Mat, Glass Fabric

Availability : As per Specification

Available Colors



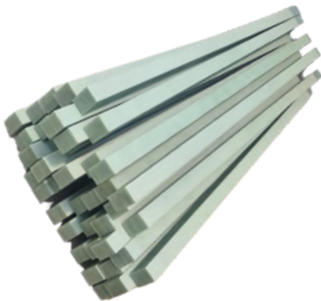
## FRP INSULATION BLOK

RESIN GRADE : Polyester / Epoxy

AS PER DRAWING & SPECIFICATION



Available Colors



## FRP / EPOXY BAR

Brand : SMITHLAMINA

Products: FRP Flange

Resin Grade: Polyester, Epoxy

Fabric: Glass Mat, Glass Fabric

Size Availability: As Per Drawing

Available Colors



## FRP MOLDED PARTS

Brand : SMITHLAMINA

Grade : Epoxy, Polyester

Size Availability: As Per Drawing



Available Colors





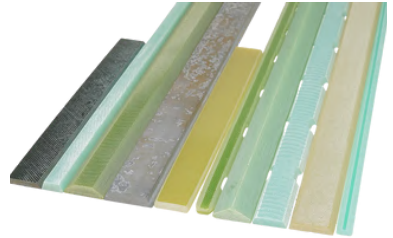


## Glass Fiber Silicone Sleeves / Jacket

Brand : SMITHFABRI  
 Coating : Silicone  
 Temp Upto : 500°C  
 Product type : Sleeves, Jackets

## Glass Fiber Wedges

Brand : SMITHLAMINA  
 Grade : Epoxy, Polyester  
 Size Availability: As Per Drawing



Available Colors 



## Glass Fiber Dogbones

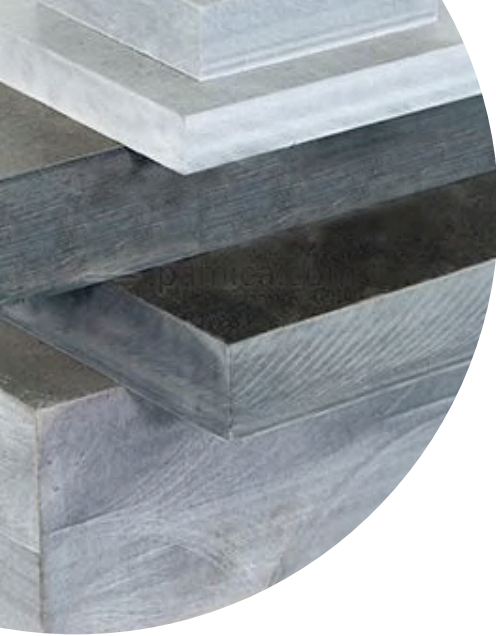
Brand : SMITHLAMINA  
 Grade : Epoxy, Polyester  
 Size Availability: As Per Drawing

Available Colors 

## FRP FASTENERS

Brand : SMITHLAMINA  
 Grade: Polyester Tube  
 Grade : GPO-3  
 Fabric: Glass Mat  
 Length: Upto 1000mm, Dia : 10 -100 mm  
 Temperature: 150°C





# MICA Composite

Mica composites are materials that incorporate mica, a silicate mineral, impregnated with silicone resin under high pressure and heat, to produce rigid and flat surface sheet. These composites are valued for their high-temperature stability and electrical resistance, making them suitable for electrical and thermal insulation applications.



## SILICONE MICA SHEET- Muscovite

Brand : **SMITHTHERM**

Grade : Smithlamina - SM

Size Availability: 1000 x 1200, 1000x 2400

Thickness : 0.15 to 50 mm

Temperature: < 600C

Color 

---

## SILICONE MICA SHEET - Phlogopite

Brand : **SMITHTHERM**

Grade : **Smithlamina - SP**

Size Availability: 1000 x 1200, 1000x 2400

Thickness : 0.15 to 50 mm

Temperature: < 800C

Color 





## SILCONE MICA SHEET - Synthetic

Brand : **SMITHTHERM**

Grade : **Smithlamina - SS**

Size Availability: 1000 x 1200

Thickness : 2 to 25 mm

Temperature: < 1200C

Color

---

## FLEXIBLE MICA SHEET - Phlogopite

Brand : **SMITHTHERM**

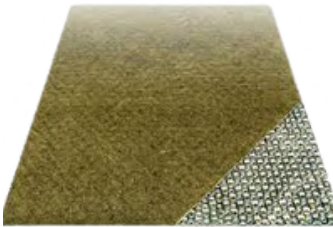
Grade : **Smithlamina - FP**

Size Availability: 1000 x 1200

Thickness : 0.5 to 5 mm

Temperature: < 800C

Color



---

## GASKET MICA SHEET - Phlogopite

Brand : **SMITHTHERM**

Grade : **Smithlamina - GPS**

Size Availability: 1000 x 1200

Thickness : 0.5 to 5 mm

Temperature: < 800C

Color

---

## CERAMIC MICA ROLLS

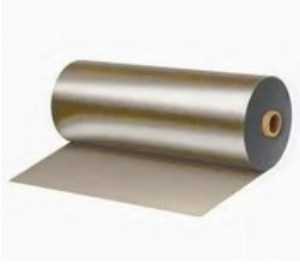
Brand : **SMITHLAMINA**

Grade : **Phlogopite**

Roll Size : 5, 10, 25 Meter

Thickness : 3, 5, 10mm





## GLASS MICA ROLL

Brand : SMITHTHERM  
Grade : Smithlamina - GM  
Size Availability: WIDTH 1000MM  
Length : 25 Mtr, 50 Mtr  
Thickness : 0.1 to 3 mm  
Temperature: < 600C  
Baking : GLASS CLOTH

---

## MICA TUBE / BUSH

Brand : SMITHLAMINA  
Grade : Muscovite, Phlogopite  
Size Availability: ID > 6mm  
Thickness : > 0.5mm  
Length : Upto 1500 mm Customised



## MICA WASHER

Brand : SMITHLAMINA  
Grade : Muscovite, Phlogopite, Synthetic,  
Natural Mica  
Availability : As per drawing or specification

---

## SILICONE MICA COLLAR BUSH

Brand : SMITHLAMINA  
Grade : Muscovite, Phlogopite, Synthetic,  
Size Availability: As per Drawing  
Type : In Single Pcs or Half Pcs







## MICA RING / FLANGE

Brand : SMITHLAMINA

Grade : Muscovite, Phlogopite, Synthetic,  
Natural Mica

Availability : As per drawing or specification

---

## MICA SPACERS

Brand : SMITHLAMINA

Grade : Muscovite Mica

Availability: As Per requirement



## MACHINED FABRICATED PARTS

Brand : SMITHLAMINA

Custom designed fabrication as per drawing  
and specification

---

## DIE PUNCHED MICA PARTS

Brand : SMITHLAMINA

Custom designed fabrication as per drawing  
and specification





## YOKE MICA PAD - Silicone

**Brand :** SMITHLAMINA

**Grade :** MICA & SILICONE RUBBER WITH FRP INSERT

**Size Availability:** As per requirement

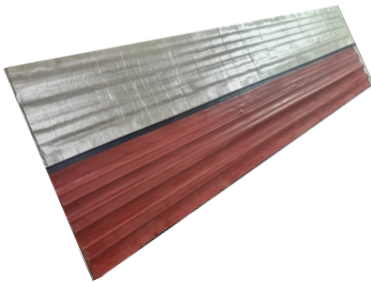
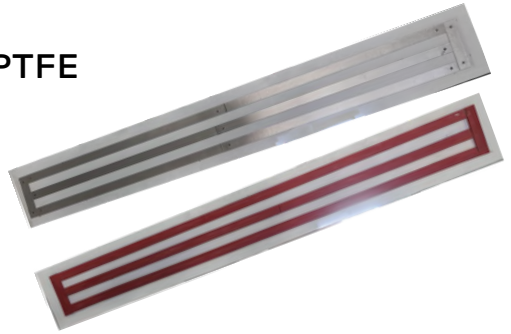
---

## YOKE INSULATION PAD - PTFE

**Brand :** SMITHLAMINA

**Grade :** MICA & PTFE WITH FRP INSERT IN SILICONE

**Size Availability:** As per requirement



## YOKE MICA PAD

**Brand :** SMITHLAMINA

**Grade :** Flexible Mica with Silicone Backing

**Size Availability:** As Per specification

---

## MICA HORIZONTAL & VERTICAL INSULATION

**Brand :** SMITHTHERM

**Grade :** Smithlamina

**Availability:** As per specifications



# More Insulations & Parts

We offering variety of insulating materials and expanded solutions tailored to the specific needs of each industry, whether it's for heat resistance, electrical insulation, or environmental stability. From Steel / alloy melting furnaces to Medical & Aerospace, Electronics & Electrical Industries providing thermal protection and enhancing energy efficiency



## PTFE SHEETS / SKIVED SHEET

Brand : SMITHPLAST

Size Availability: 1000 X 1000

THICK : 0.5 - 50 MM

---

## PTFE RODS & BUSH

Brand : SMITHPLAST

Grade : **Virgin / Filled**

Availability : As per requirements





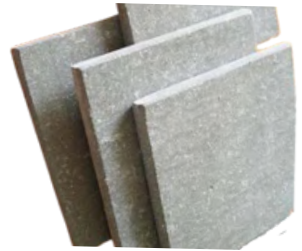
## PTFE CUSTOMISED PARTS

Brand : SMITHPLAST  
AS PER DRAWING & SPECIFICATION

---

## SYNDHANIO SHEET

Size Availability:- 1000 X 1200 MM  
Thickness : 3mm to 100 mm



## SYNDHANIO SPACERS / MACHINED PARTS

Brand : SMITHLAMINA  
Size Availability:-  
Round: 1/4" Dia To 4" Dia  
Square: 1/4" To 4" Square  
Service Temperature: 2200°F/1200°C

---

## PHENOLIC SHEET & PARTS

Type : Phenolic Fabric Laminates  
Products: Sheets,  
Fabricated Parts







## CERAMIC BLANKET

Roll size : 7300 x 610mm

Thick : 25mm

Service Temperature: 1260°C / 1425°C

Density : 64, 96, 128, 160 Kg/m<sup>3</sup>

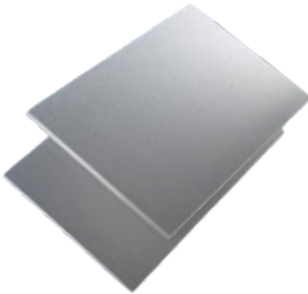
---

## CERAMIC PAPER / FELT

Size : 1000 x 1000mm, 1.2 x 20mtr

Thick : 0.5 mm - 6 mm

Service Temperature: < 1425°C



## CERAMIC FIBER BOARD

Size : 1000 x 500 mm

Thick : 5 - 50 mm

Service Temperature: 1260°C

Density : 400 Kg/m<sup>3</sup>

---

## CERAMIC ROPE / GASKET

Brand : SMITHLAMINA

Size Availability:-

Round: 1/4" Dia To 4" Dia

Square: 1/4" To 4" Square

Service Temperature: 2200°F/1200°C





## ASBESTOS ROPE

Size Availability:-

Round: 1/4" Dia To 2" Dia

Square: 1/4" To 2" Square

Service Temperature: 400 °C

---

## FIBRE GLASS ROPE

Size Availability:-

Round: 1/4" Dia To 2" Dia

Square: Upto 4"

Service Temperature: 1000°F/540°C



## SILICA ROPE

Size Availability:-

Round: 1/4" Dia To 2" Dia

Square: 1/4" To 2" Square

Service Temperature: 2000°F/1100 °C

---



## EXPENDED GRAPHITE GLAND PACKING ROPE

Size : 3 - 100 MM

Temp : 350°C

Shape : Round / Square





## SILICONE RUBBER TAPE

Width : 25 - 40 mm  
Thick : 0.5mm  
Length : Roll 10 Mtr  
Operating Temp : 260°C

---

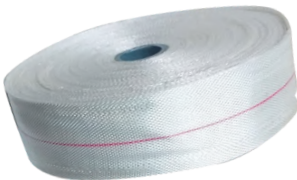
## MICA TAPE

Brand : SMITHTHERM  
Grade : Smithlamina - GPS  
Size Availability: Width upto 75 MM  
Length : 25, 50, 100 Mtr  
Thickness : 0.2 - 0.5 mm  
Temperature: < 800C  
Baking : GLASS CLOTH



---

## GLASS TAPE



Size Availability: Width upto 50 MM  
Length : 25, 50, 100 Mtr  
Thickness : 0.2 - 3 mm  
Temperature: < 600C

---

## COATING RESIN & HARDENER

Resin and Hardener for Coating induction coils of electric induction furnace.

Properties : High Electrical Resistance



# MINERAL WOOL INSULATION

Mineral wool insulation is extensively used in industries for its superior thermal and acoustic insulation properties. It effectively reduces energy costs and provides fire resistance, enhancing safety and efficiency in industrial settings.

## APPLICATIONS:





## LRB MATTRESS



Brand : SMITHWOOL

Width: 1220mm

Density(Kg/m<sup>3</sup>): 85,100,128,144,150,160

Thickness : 25mm To 100mm

Temperature: Varies On Density

---

## RESIN BONDED MATTRESS

Brand : SMITHWOOL

Length : 1000mm

Width: 500mm

Density(Kg/m<sup>3</sup>): 48, 64, 96, 144, 150, 160

Thickness : 25mm To 100mm

Temperature: Varies On Density



## PIPE SECTION INSULATION



Brand : SMITHWOOL

Temperature: Upto 350°C

Size: As per Requirement

---

## LOOSE MINERAL WOOL

Brand : SMITHWOOL

Temperature : -50°C to 750°C

Availability: 40 Kg HDPE Bag

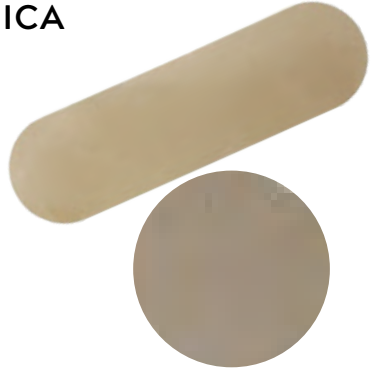


# LIQUID LEVEL GAUGE SPARES



## MICA STRIPS / GAUGE GLASS MICA

Brand : SMITHMICA  
 Grade : V1, V2, V3, V4  
 Size Availability- L : < 508 mm, W : < 34 mm  
 Thickness : 0.05 - 0.4 mm



## MICA DISCS

Brand : SMITHMICA  
 Grade : V1, V2, V3, V4  
 Size Availability- UPTO 250MM  
 Thickness : 0.05 - 0.4 mm



## GASKET FOR Liquid Level Gauge

Availability : Standard size

## LIQUID LEVEL GAUGE GLASSES

Shape : Long Form  
 Type : Reflex / Transparent  
 Length : 95-508 mm,  
 Width : 25,30, 34 mm

Shape : DISC  
 Dia : 24 - 265 mm





# Why INSULAC



## High end Fabrication

Custom Fabrication. Services include cutting, milling, slotting, shearing, drilling, tapping, turning, boring, routing, and sanding to exact specifications.



## Quality

- ISO 9001:2015 Certified
- Cutting-edge inspection
- Skilled inspection staff
- Precision focused



## Satisfaction Commitment

- Timely delivery
- Responsive, dedicated account managers
- Meets deadlines and production schedules
- Cost-efficient.

GET STARTED AND EXPERIENCE  
UNMATCHED  
QUALITY AND SPECILIZED SOLUTIONS

**W**ide range of  
High Performance  
**INSULATING  
MATERIAL**



**Scan to send  
Enquiry**

**Contact Us**



PS QUBE, Room # 807  
Newtown, Action Area 2D  
Kolkata 700161, 24Pgns(N)  
West Bengal, India

📞 +91-9147073510  
+91-9142510072  
✉️ sales@insulac.com  
🌐 www.insulac.com